

TRAMANIA - SNCV models - LGB scale



SUBSCRIPTION: kits SNCV vicinal scale G-IIm-1/22,5

Pls send per Email or Post to:

TRAMANIA asbl
Venelle au Palio 49
1150 Bruxelles
Belgium

| | | | |
|---|------|---|---|
| REM01: trailer A.806 6 equal arched windows | 195€ | x | = |
| REM02: trailer A.871 6 equal rectangular windows | 195€ | x | = |
| REM03: trailer A.11514 6 uneq. windows 1rst/2nd | 195€ | x | = |
| REM04: luggage van A.2309 | 195€ | x | = |
| REM05: trailer CBR B328 (MVTs) | 195€ | x | = |
| REM06: trailer A.1332 6 eq.windows in 3 groups | 195€ | x | = |
| ACC01: 2 realistic SNCV couplings | 15€ | x | = |
| ACC02: your choice of decals: 2 coats of arms + 4 numbers | 10€ | x | = |
| ACC03: 1 realistic SNCV lantern made in brass | 15€ | x | = |

Post (Belgium) - 1,2,3 kits=13,20€ - 4,5,6=26,40€

Post (FR,UK,NL,DE,Lux.) - 1,2,3 kits=16,40€ - 4,5,6=32,80€

Post (Rest of World) - 1,2,3 kits=32,80€ - 4,5,6=65,60€

TOTAL TO PAY

I pay the sum of _____ in order to subscribe to _____ item(s) on the account
IBAN : BE 41 0001 3319 1710 BIC BPOTBEB1 of TRAMANIA asbl. Please add a
comment for instance: "Subscription of 2 kits 1x REM01 1x REM04 and 1x ACC02"
Do not forget to include Post costs

Signature:

Date:

Nom (*Name*) :

Prénom (*First name*) :

Adresse (*Address*) :

Ville (*City*) :

Code postal (*Zip code*) :

Courriel (*e-mail*):

Téléphone (*Phone*):

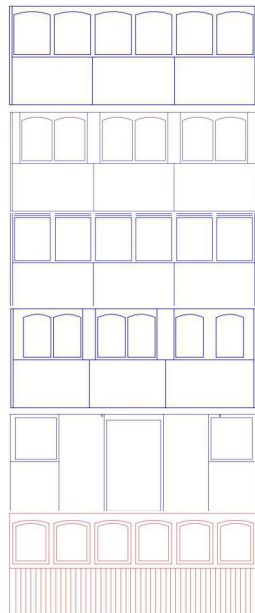
Pays (*Country*):

Subscription/News*^{*}: SNCV kits scale G-IIIm-1/22.5-gauge 45mm

The sale price is 195 EUR each + registered mail.

- * Option 1: Working screw couplings: 15 EUR
- * Option 2: Decals - your choice of car number: 10 EUR
- * Option 3: realistic SNCV lantern made in brass: 15 EUR

Very detailed, based on original SNCV drawings, six different trailers are proposed:



A.806 trailer 2d class 6 equal arched windows,

A.871 trailer 2d class 6 equal rectangular windows,

* A.1332 trailer 2d class with 6 windows in 3 groups,

A.11514 trailer 1st and 2d class 6 unequal arched windows,

A.2309 luggage van (original aspect - no platform windows)

B.328 trailer of the CBR (preserved at MTVS)



Look at the prototypes at <http://www.tramania.net/albumModele6BV/index.html> and <http://www.tramania.net/albumModeleFourgon/index.html>

Elements of the complete set:

- truck and platform fences in pre-cut metal,
- Tenmille spoked wheels,
- buffers, chimney and SNCV axle boxes in brass,
- bolts and spacers for assembly,
- body, roof and seat in pre-cut wood,
- seat legs in turned wood,
- fences handrail, beltline and cover plate in wood,
- windows in pre-cut acryl,
- 12 handrail support and wire in brass,
- fake SNCV coupling, (fits with Regner couplings)
- free water decals for above mentioned car numbers "standard", coat of arms,



Kit assembly: nothing to solder, nothing to cut. A file, plyers, glue, pencils and paints are sufficient. The pre-cut metal pieces are assembled by plying, rivets or bolts. The pre-cut wood pieces are glued. Pictures are just examples and are not contractual, the kits are delivered not painted and figures are not included.

Please check on www.tramania.com for news, instructions, new developments.

Contact: pdussart@tramania.com

Planning: the subscription closes by October 15th. End 2017/Beginning 2018: kits delivery.

Beginning 2018:

subscription for MOTOR CARS - SNCV / XL-Boendael / North
(all with open platforms - pre 1910 original set-up):

Sales price estimate: 300,00 à 350,00 EUR.

Made in metal and wood.

Swiss MAXON motor with 9 commutators (24V 6 watts),

Gears + trolley in brass,

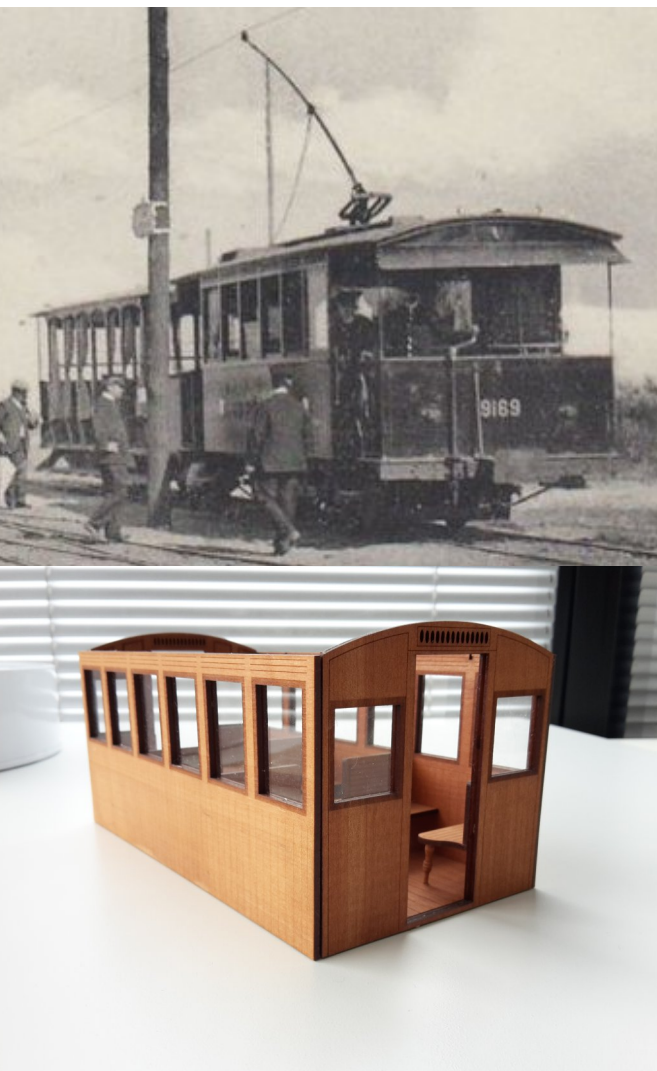
Brill or GE truck as appropriate.

Two coat of arms and 4 numbers type A.XX, M.XX ou A.9XXX will be delivered free of charge.

Here are the car types:

1) SNCV 9001-24 (Espinette),
SNCV 9025-30 et 9048-51 (Observatoire),
SNCV 9031-47 et 9119-9122 (Centre I),
Ixelles-Boendael 200-272
SNCV 9086-9113(Liège)

2) North 1-14
SNCV 9169-9182 (Phare en version teck originale)



Motrice 9169 à Westende vers 1905

Motrice 19 préservée au Musée de Liège

Prototype de caisse en bois

Improvement to the production models (update 30/8/2017)

Links and picture shown so far on forums are related to models prototypes.

Various improvements are made to the models to be delivered, based on prototype assembly and remarks from model makers:

- metal truck: springs will be made in steel (assembly)
- metal truck: a tool will be delivered in order to ease square holes adjustments.
- body: in order to facilitate the painting process, the windows will be separate from the body sheets. You can paint separately windows frames and the body without any risk of mistake and without masking tape. The painting and assembly are therefore simplified and the overall aspect of the model is improved.
- roof: the roof will be made of a single sheet, instead of 21 pieces of wood. The set-up will be straightforward, cleaner and the result better. The external part of the roof will be even, while the inner part will get engraved lines. A couple of holes will ease the positioning of the chimneys.
- chimneys: will be in brass instead of 3D prints.
- roof/safety guards: a new system has been designed to hold the roof.
- "standard" water decals: one set of 2 coats of arms with the text "Société Nationale des Chemins de fer Vicinaux" and 4 specific car numbers are delivered according to the type of car ordered:
 - A.806 - light blue/dark blue for cream livery,
 - A.1332 - gold for green livery
 - A.871 - light blue/dark blue for cream livery,
 - A.11514 - gold for green livery
 - A.2309 - brown for cream livery,
- luggage van A.2309: the sliding doors system is simplified and more realistic, by addition of new metal pieces as per the original cars.
- "standard" couplings: articulated couplings are delivered with the kit. They are made of metal pieces to bend with a plyer. They will look like SNCV couplings, but without screws.

Additional options for sale

- "optional" couplings: based on modified Marklin 56101 screw couplings. In order to look like SNCV couplings, two additional metal pieces will be delivered and will replace the heavy normal gauge hook.
- "option" lantern: based on drawings and pictures of SNCV lanternes, scale lanterns will be available. Delivered with a see-through acryl glass. Hole to power a LED.
- "option" water decals: one set of 2 coat of arms with the text "Société Nationale des Chemins de fer Vicinaux" and your choice of 4 car numbers, to be chosen from light blue/dark blue for cream livery, gold for green livery, brown for cream livery,



Traile A.871 - Le Coq / De Haan
(Trammelant)